

Haringey economic statistics

March 2009

Overview - UK

- ILO unemployment - **1.97m** (↑ 369k)
- ILO unemployment rate – **6.3%** (↑ 1.1pp)
- **29.36m** people employed (↑ 37k)
- Employment rate - **74.3 per cent** (↓ 0.7pp)
- Claimant count – **1.23m** (↑ 438k)
- Vacancies – **504,000** (↓ 179k)

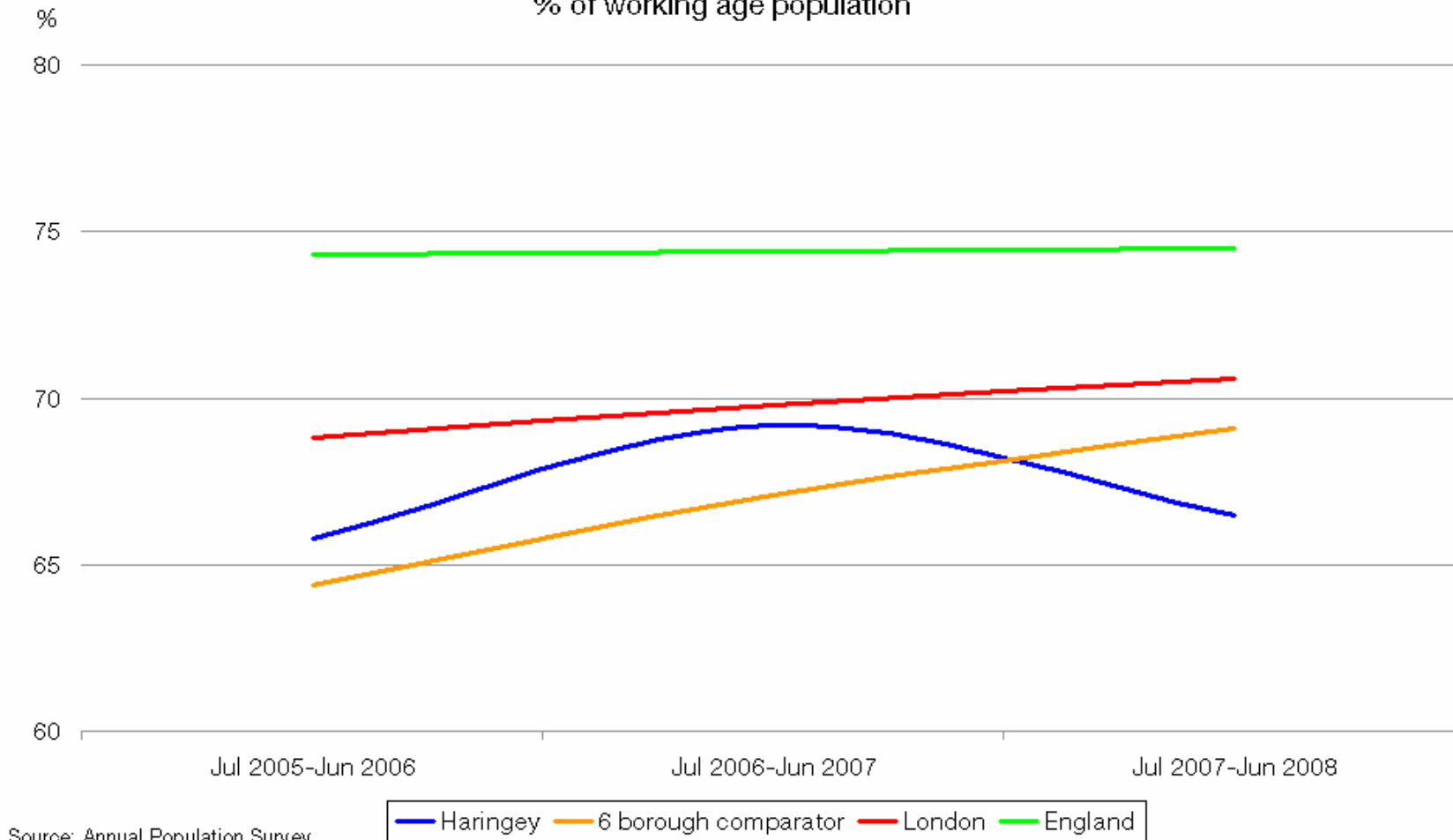


Overview - London

- ILO unemployment – **294k (↑ 33k)**
- ILO unemployment rate – **7.2% (↑ 0.6pp)**
- **3.78m** people employed (↑ 88k)
- Employment rate – **71.6% (↑ 0.6pp)**
- Claimant count – **168k (↑ 37k)**

Employment rate

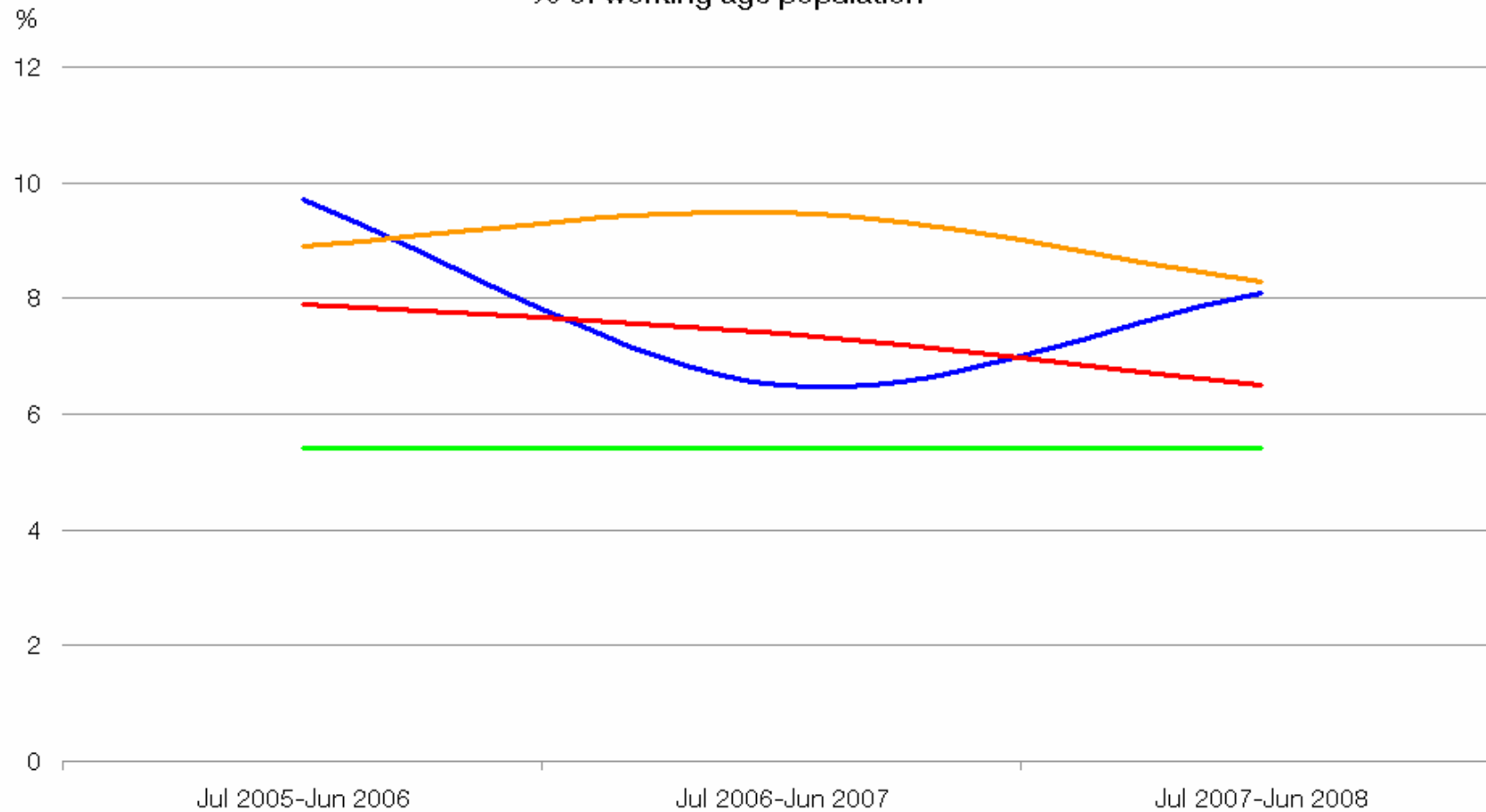
Working age employment rate, July 2005-June 2006 to July 2007-June 2008
% of working age population



Source: Annual Population Survey

ILO unemployment rate

ILO unemployment rate, July 2005-June 2006 to July 2007-June 2008
% of working age population



Source: Annual Population Survey

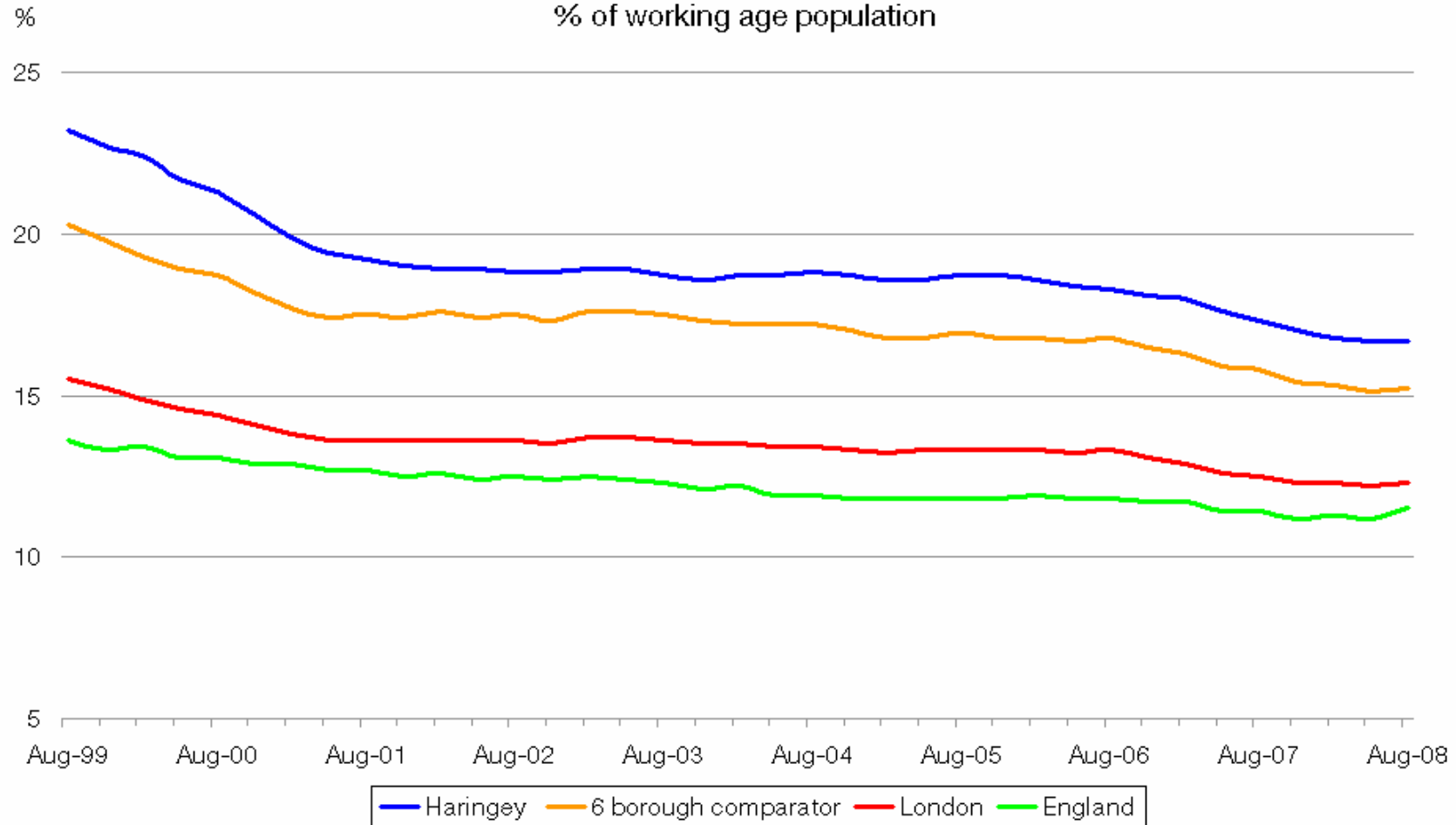
— Haringey — 6 borough comparator — London — England



Haringey Council

Out of work benefits

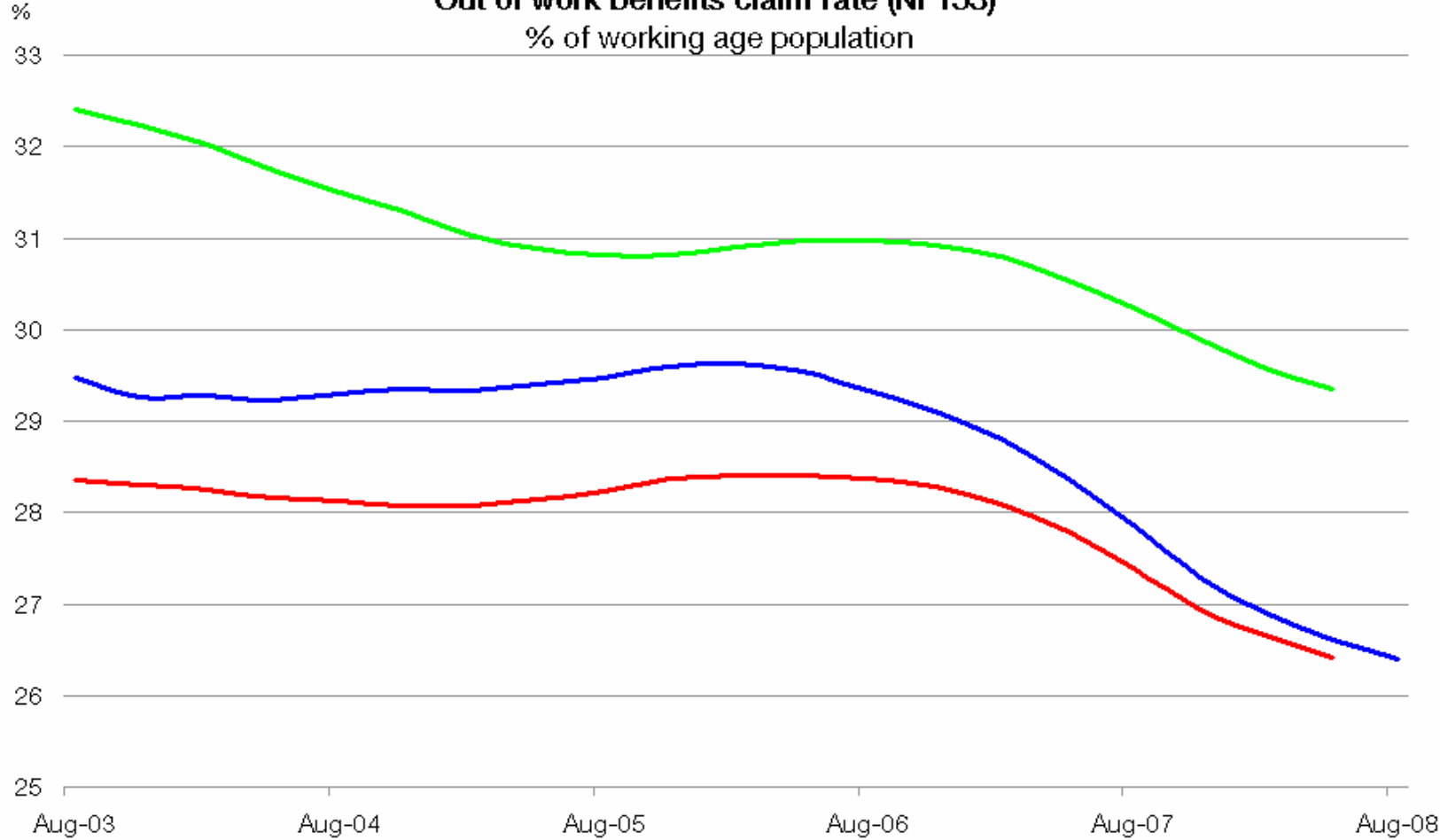
Out of work benefit claimants, August 1999 to August 2008
% of working age population



Source: Work & Pensions Longitudinal Study

Out of work benefits in the worst performing neighbourhoods

Out of work benefits claim rate (NI 153)
% of working age population

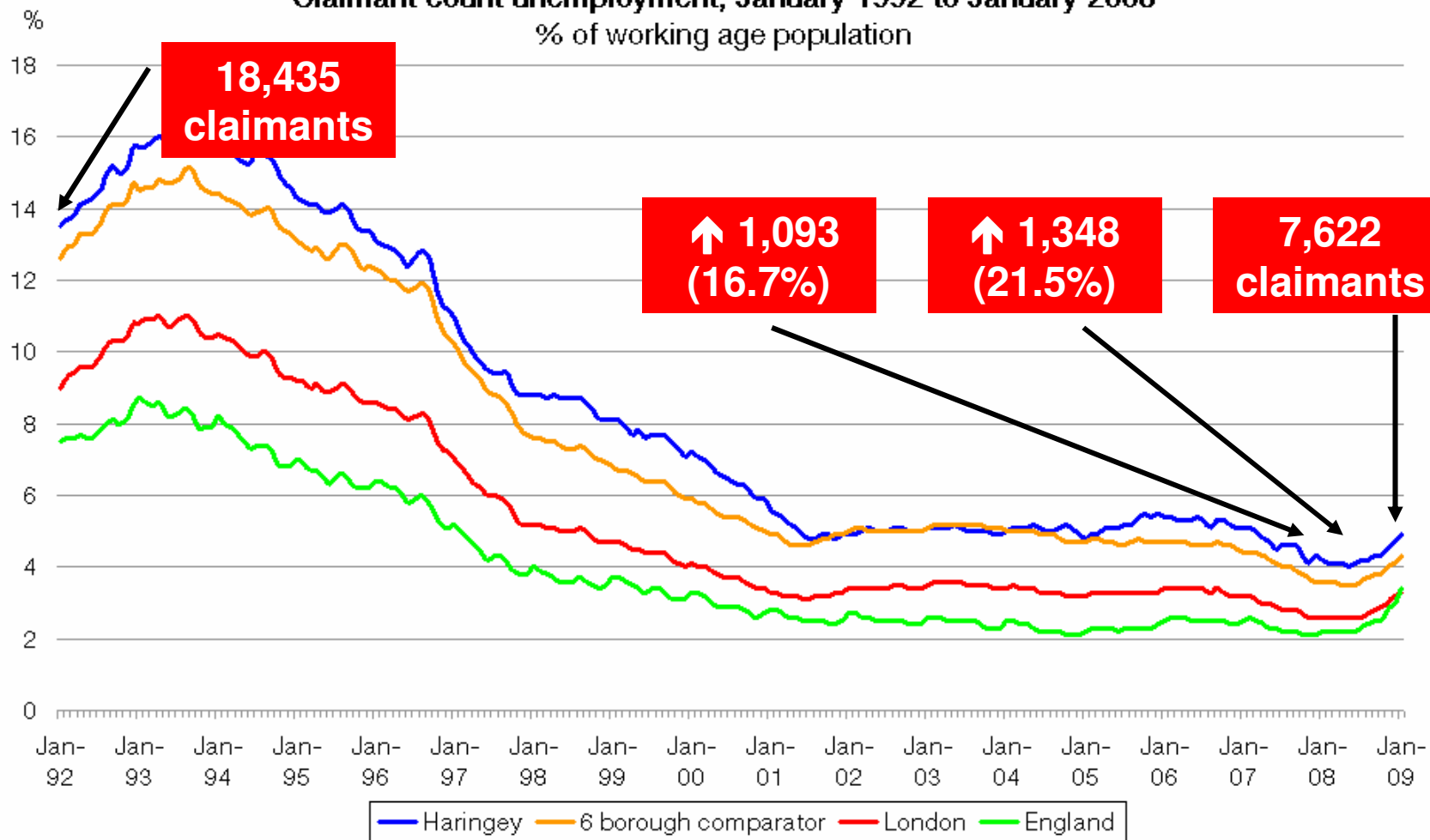


Sources: Nomis and ONS

— Haringey — London — England

Claimant count

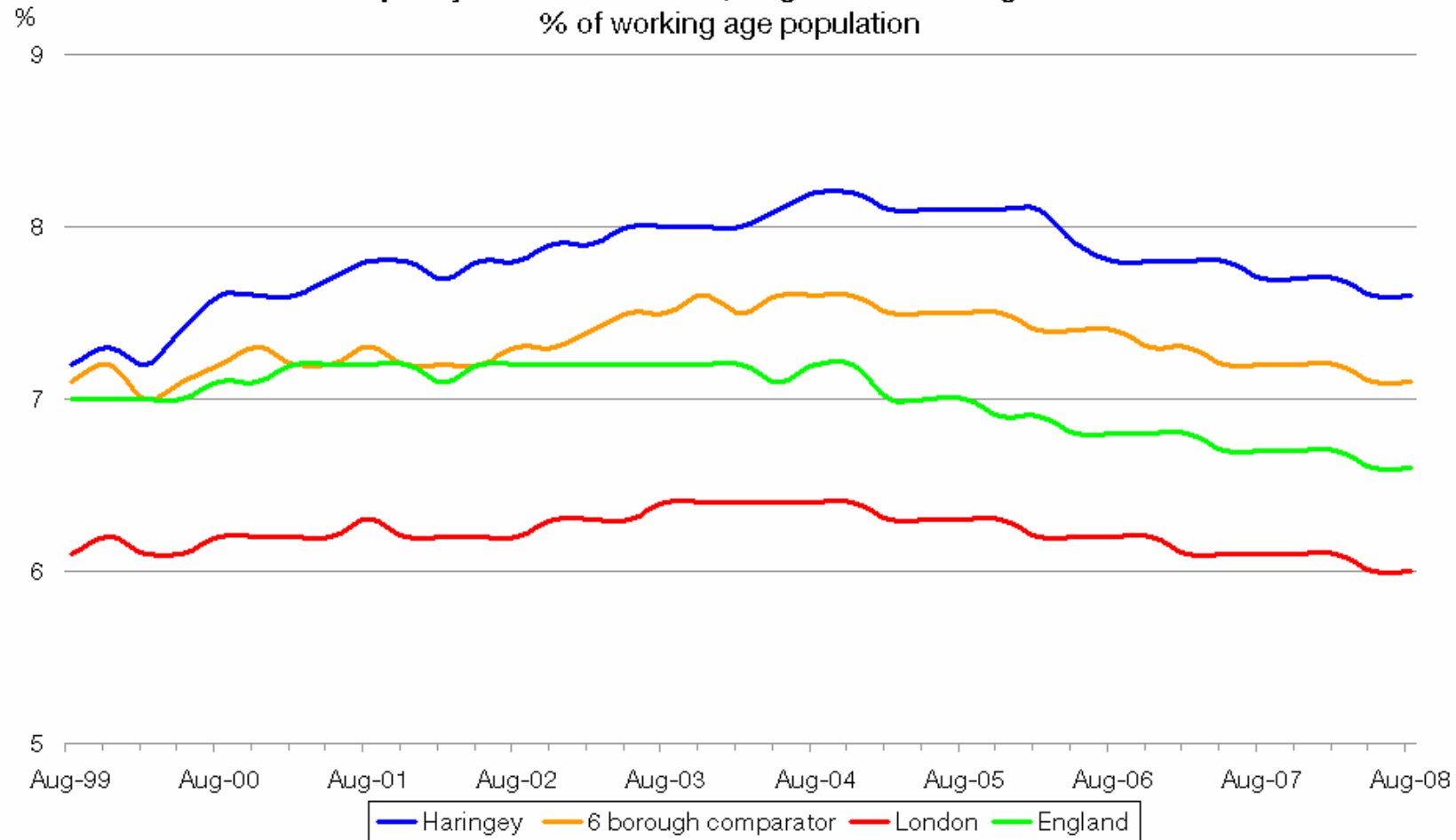
Claimant count unemployment, January 1992 to January 2008
% of working age population



Source: Nomis

Incapacity Benefit

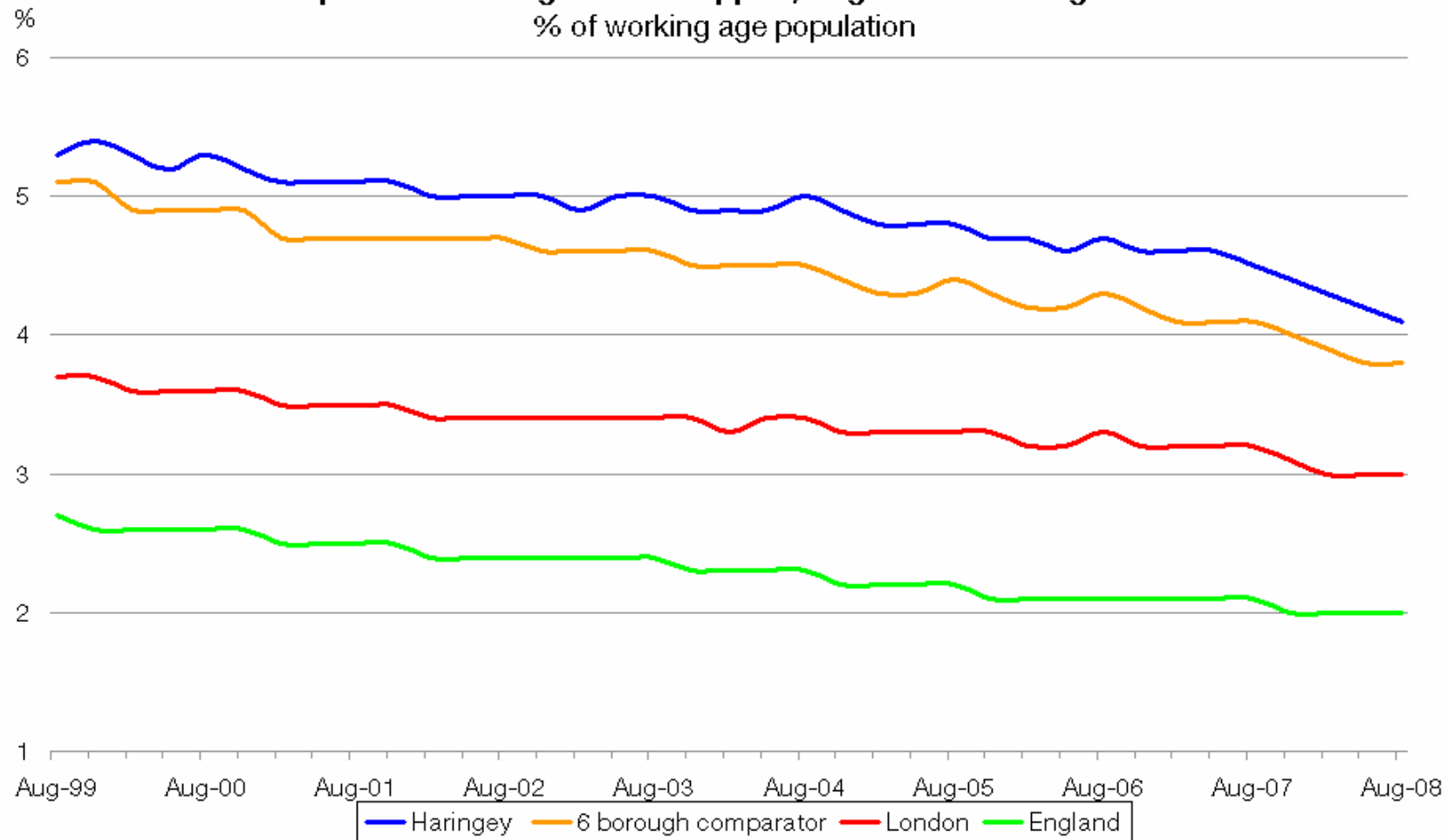
Incapacity Benefit claimants, August 1999 to August 2008
% of working age population



Source: Work & Pensions Longitudinal Study

Lone parents claiming Income Support

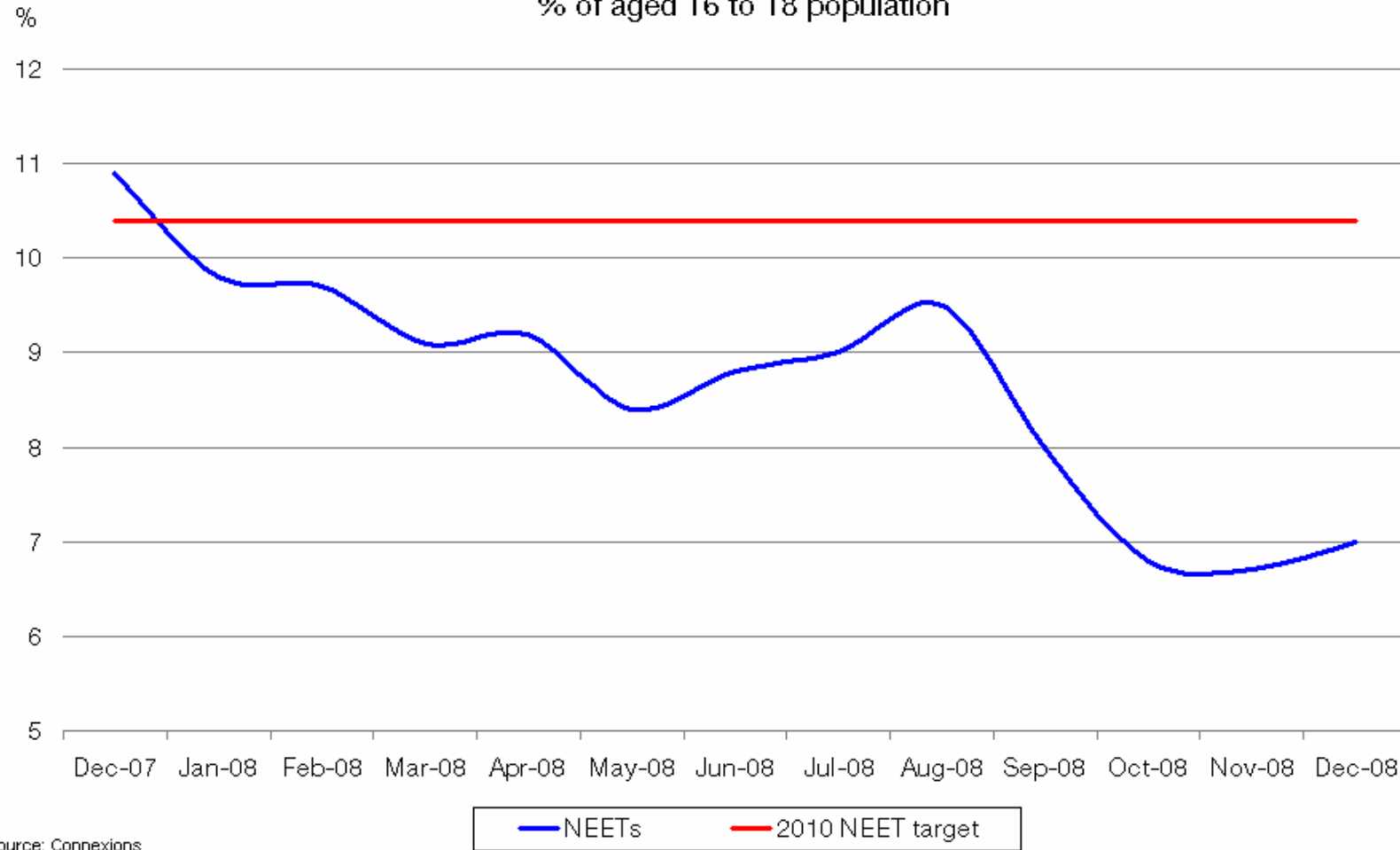
Lone parents claiming Income Support, August 1999 to August 2008
% of working age population



Source: Work & Pensions Longitudinal Study

NEETs

NEETs, December 2007 to December 2008
% of aged 16 to 18 population



Source: Connexions

New business registration rate

NI 171 performance data - new business registration rate
Number of new registrations per 10,000 16+ population

